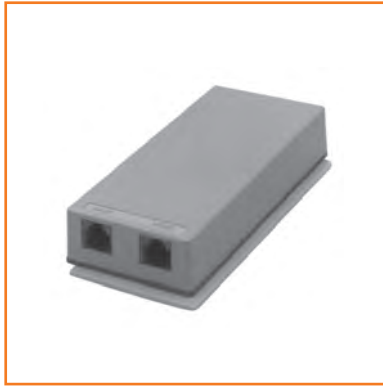


Surface Blocks



PT-625ADV / PT-625ALL Surface Block

PREMIER® PT-625ALL/PT-625ADV Surface Block

The PT-625 duplex surface block provides dual 4 conductor or 6 conductor jacks packaged into a slim housing which fits most office tele-power poles and other restricted mounting surfaces. Each jack is conveniently labeled DATA/VOICE (PT-625ADV) or LINE1/LINE2 (PT-625 ALL). Assembly includes a snap-on cover, ring terminals, and double-sided adhesive tape.

- UL listed
- FCC part 68 compliant

PREMIER

Item No.	Mfg. Part No.	Description	Dimensions	USOC Codes
4831057500	PT-625ADV-4-44	Duplex 6P4C Labeled DATA and VOICE Ash	2.1"W x 0.9"H x 4.6"L	RJ11C - 14C / RJ1DC
4831067500	PT-625ALL-4-44	Duplex 6P4C Labeled LINE 1 and LINE 2 Ash	2.1"W x 0.9"H x 4.6"L	RJ11C - 14C / RJ1DC
4831087500	PT-625ADV-6-44	Duplex 6P6C Labeled DATA and VOICE Ash	2.1"W x 0.9"H x 4.6"L	RJ18C - 19C / RJ25C
4831097500	PT-625ALL-6-44	Duplex 6P6C Labeled LINE 1 and LINE 2 Ash	2.1"W x 0.9"H x 4.6"L	RJ18C - 19C / RJ25C
4845797500	PT-625ADV-6-85	Duplex 6P6C Labeled DATA and VOICE White	2.1"W x 0.9"H x 4.6"L	RJ18C - 19C / RJ25C
4845817500	PT-625ALL-6-85	Duplex 6P6C Labeled LINE 1 and LINE 2 White	2.1"W x 0.9"H x 4.6"L	RJ18C - 19C / RJ25C



PT-625AQ2 Surface Block

PREMIER PT-625AQ2 Surface Block

The PT-625AQ2 surface block is designed for direct mounting on any flat surface. This assembly includes a base, snap-on cover, and double-sided adhesive tape. Conductor leads are equipped with ring terminals for easier installation.

- UL listed
- FCC part 68 compliant

PREMIER

Item No.	Mfg. Part No.	Description	Dimensions	USOC Codes
4807677500	PT-625AQ2-4-44	6P4C Ash	2.0"W x 0.9" H x 2.3"L	RJ11C - 14C / RJ1DC
4808547500	PT-625AQ2-4-50	6P4C Ivory	2.0"W x 0.9" H x 2.3"L	RJ11C - 14C / RJ1DC
4843977500	PT-625AQ2-4-85	6P4C White	2.0"W x 0.9" H x 2.3"L	RJ11C - 14C / RJ1DC
4807757500	PT-625AQ2-6-44	6P6C Ash	2.0"W x 0.9" H x 2.3"L	RJ18C - 19C / RJ25C
4808577500	PT-625AQ2-6-50	6P6C Ivory	2.0"W x 0.9" H x 2.3"L	RJ18C - 19C / RJ25C
4843987500	PT-625AQ2-6-85	6P6C White	2.0"W x 0.9" H x 2.3"L	RJ18C - 19C / RJ25C

Surface Blocks



Surface Block

PREMIER

PREMIER® PT-635A1M Surface Block with Cord

These security/alarm kits consist of a PT-635A1M 8 conductor block and an 8 conductor line cord. The PT-TW kit includes a 3 foot plug-to-spade data cord. The PT-TW2 kit includes a 3 foot plug-to-plug data cord. The PT-635A1M is an 8 conductor block used for security/alarm transmission devices. This surface block consists of screw terminals, a snap-on cover, and double-sided adhesive tape for a convenient and efficient jack that will mount on most flat surfaces. Shorting bars bridge together positions 1 to 4 and 5 to 8 whenever a modular plug is not inserted into the jack.

- UL listed
- FCC part 68 compliant

Item No.	Mfg. Part No.	Description	Dimensions	USOC Codes
4841047500	PT-TW2	8P8C RJ31X Kit With 3 Foot Plug to Plug Line Cord Ash	2.0"W x 1.0"H x 2.0"L	RJ31X - 38X
4841037500	PT-TW	8P8C RJ31X Kit With 3 Foot Plug to Spade Line Cord Ash	2.0"W x 1.0"H x 2.0"L	RJ31X - 38X



PT-742A Wire Junction Box

PREMIER

PREMIER PT-742A Wire Junction Box

The PT-742A junction box mounts directly on any flat surface. This junction box connects 4 additional extensions, in parallel, to an existing modular jack. Conductors do not need to be stripped to be connected to the color-coded screw terminals. This junction box consists of a base, snap-on cover and mounting screws. The PT-742A also contains a 12 inch 4 conductor cord with a modular plug.

- UL listed
- FCC part 68 compliant

Item No.	Mfg. Part No.	Description	Dimensions
4808947505	PT-742A-4-50	6P4C Wire Junction Box With 12 Inch Cord Ivory	2.0"W x 1.3"H x 4.4"L



PT-625C Surface Block Cover

PREMIER

PREMIER® PT-625C Surface Block Cover

The PT-625C surface block cover is used in conjunction with an existing standard 42A block to provide a modular connection. The cover includes a fastening screw and spade tipped wire terminals.

- UL listed
- FCC part 68 compliant

Item No.	Mfg. Part No.	Description	Dimensions	USOC Codes
4807297500	PT-625C-4-44	Cover 6P4C Ash	2.2"W x 0.9"H x 2.7" L	RJ11C - 14C / RJ1DC

Surface Blocks



PT-625S Surface Block

PREMIER PT-625S Surface Block

The PT-625S surface block features a rotating jack cover that protects the jack from contamination when not in use. It consists of a 625T cover with spade tip leads and a 42A Block.

- UL listed
- FCC part 68 compliant

PREMIER

Item No.	Mfg. Part No.	Description	Dimensions	USOC Codes
4807987500	PT-625S-6-50	6P6C With Rotating Cover Ivory	2.3"W x 0.8"H x 3.5"L	RJ18C - 19C / RJ25C



PT-625SA/PT-625T Surface Block / Cover

PREMIER® PT-625SA Gel Surface Block

The PT-625SA-4-GEL-52 surface block is filled with a non-toxic water and corrosion resistant gel. The gel keeps the connection points clean and prevents corrosion. A spring-loaded rotating jack cover protects the jack from contamination when not in use. It consists of a 625T cover with spade tip leads and a 42B block.

- UL listed
- FCC part 68 compliant

PREMIER

Item No.	Mfg. Part No.	Description	Dimensions	USOC Codes
4846847500	PT-625SA-4-GEL-52	6P4C With Rotating Cover Gel Filled Electrical Ivory	2.3"W x 1.4"H x 3.5"L	RJ11C - 14C / RJ1DC

Wall Jacks



PT-630AC Wall Jack

PREMIER

Item No.	Mfg. Part No.	Description	Dimensions	USOC Codes
4806547500	PT-630AC-4-44	6P4C Ash	3.0"W x 0.3"H x 4.5"L	RJ11W - 14W
4802377500	PT-630AC-6-44	6P6C Ash	3.0"W x 0.3"H x 4.5"L	RJ18C - 19C / RJ25C
4845747500	PT-630AC-6-85	6P6C White	3.0"W x 0.3"H x 4.5"L	RJ18C - 19C / RJ25C

PREMIER PT-630AC Wall Jack

The PT-630AC wall jack uses screw terminals with conductor leads that are riveted in place for easier installation.

- UL listed
- FCC part 68 compliant



PT-630AD Wall Jack

PREMIER

Item No.	Mfg. Part No.	Description	Dimensions	USOC Codes
4807397500	PT-630AD-4	6P4C Steel	3.0"W x 0.3"H x 4.5"L	RJ11W - 14W
4807417500	PT-630AD-6	6P6C Steel	3.0"W x 0.3"H x 4.5"L	RJ18C - 19C / RJ25C

PREMIER® PT-630AD Wall Jack

The PT-630AD wall jacks are stainless steel and use screw terminals with conductor leads that are riveted in place for easier installation.

- UL listed
- FCC part 68 compliant



PT-630AP Wall Jack

(Note: Corners are round not octagonal.)

PREMIER

Item No.	Mfg. Part No.	Description	Dimensions	USOC Codes
4807687500	PT-630AP-4-44	6P4C Ash	3.0"W x 0.3"H x 4.5"L	RJ11W - 14W
4838137500	PT-630AP-4-50	6P4C Ivory	3.0"W x 0.3"H x 4.5"L	RJ11W - 14W
4847797500	PT-630AP-4-85	6P4C White	3.0"W x 0.3"H x 4.5"L	RJ11W - 14W
4807697500	PT-630AP-6-44	6P6C Ash	3.0"W x 0.3"H x 4.5"L	RJ18C - 19C / RJ25C
4838147500	PT-630AP-6-50	6P6C Ivory	3.0"W x 0.3"H x 4.5"L	RJ18C - 19C / RJ25C

PREMIER PT-630AP Wall Jack

The PT-630AP wall jacks use screw terminals with conductor leads that are riveted in place for easier installation.

- UL listed
- FCC part 68 compliant

Wall Jacks



PT-630B Wall Jack

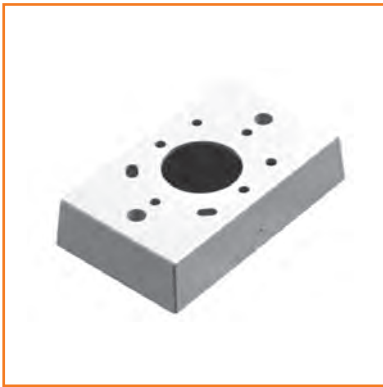
PREMIER PT-630 Wall Jack Spacer

The PT-630-SPACER is a wall jack spacer designed to assist in surface mounting of steel bracketed PT-630-type wall jacks.

- UL listed
- FCC part 68 compliant

PREMIER

Item No.	Mfg. Part No.	Description	Dimensions
4807477500	PT-630-SPACER-44	Spacer Ash	3.0"W x 0.2"H x 4.5"L



PT-625MB Flush Jack Mounting Box

PREMIER® PT-625MB Mounting Box

Flush jack mounting box is designed to allow surface mounting for rectangular jack assemblies and jack plates.

- UL listed
- FCC part 68 compliant

PREMIER

Item No.	Mfg. Part No.	Description	Dimensions
4830887500	PT-625MB-44	Mounting Box One Inch Deep Ash	2.7"W x 4.6" H x 1.0" D
4830737500	PT-625MB-50	Mounting Box One Inch Deep Ivory	2.7"W x 4.6" H x 1.0" D
4837777500	PT-625MB-85	Mounting Box One Inch Deep White	2.7"W x 4.6" H x 1.0" D

PREMIER PT-20502 Mounting Bracket

Flush jack round plastic mounting bracket (AT&T Comcode 401-307-244) is referred to as a mud ring for round flush jacks. This bracket is used to wall mount 625F round flush jacks.

- UL listed
- FCC part 68 compliant

PREMIER

Item No.	Mfg. Part No.	Description
4835767500	PT-20502-L2	Round Plastic Mounting Bracket For Round Flush Jacks

Adapters



PT-153AM Adapter

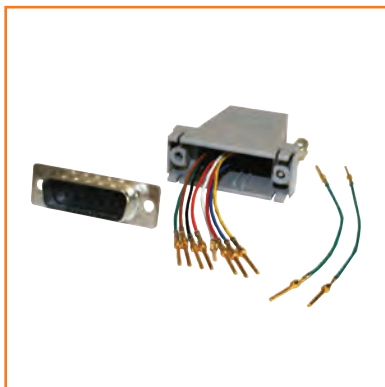
PREMIER® PT-153 Adapter

The PT-153AM adapter is designed to allow an ancillary device, electronic key set, or single line telephone set equipped with a modular plug-ended line cord to be connected to an existing 25 pair connector. No re-wiring is necessary.

- UL listed
- FCC part 68 compliant

PREMIER

Item No.	Mfg. Part No.	Description	Wiring Sequence
4806027505	PT-153AM2-BLACK	Adapter Female 25 Pair to 6P4C	Red-1; Green-26; Yellow-2; Black-27
4806057505	PT-153AM3-BLACK	Adapter Female 25 Pair to 6P6C	Red-1; Green-26; Yellow-2; Black-27; White-25; Blue-50
4833737505	PT-153AM-6-3P	Adapter Female 25 Pair to 6P6C	Red-1; Green-26; Yellow-2; Black-27; White-3; Blue-28



Data Adapter

PREMIER Data Adapters

A Data Adapter is used to convert DB9, DB15, or DB25 male or female data ports to an 8 position modular jack interface. It includes the data connector, two piece ABS plastic shell, and thumbscrews. It is customizable for any application.

- UL listed
- FCC part 68 compliant

PREMIER

Item No.	Mfg. Part No.	Description
4462267500	PT-DB9F-8P8C-TS	Adapter DB9F With Thumbscrews to 8P8C
4462257500	PT-DB9M-8P8C-TS	Adapter DB9M With Thumbscrews to 8P8C
4462287500	PT-DB15F-8P8C-TS	Adapter DB15F With Thumbscrews to 8P8C
4462277500	PT-DB15M-8P8C-TS	Adapter DB15M With Thumbscrews to 8P8C
4460637500	PT-DB25F-8P8C-TS	Adapter DB25F With Thumbscrews to 8P8C
4461297500	PT-DB25M-8P8C-TS	Adapter DB25M With Thumbscrews to 8P8C

Adapters



PT-267B T-Adapter

PREMIER

Item No.	Mfg. Part No.	Description
4831897500	PT-267B-50	6P4C Plug Splits 2 Lines Into Line 1 and Line 2 in Parallel

PREMIER® PT-267B Modular T-Adapters

The PT-267B T-Adapter is a 4 conductor adapter that connects 2 telephones or ancillary devices to 2 outside lines. This T-Adapter plugs into a standard 4 conductor modular jack where two outside lines have been wired. The T-Adapter is equipped with 4 conductor plugs and two 4 conductor jacks, that provides 2 parallel lines.

- UL listed
- FCC part 68 compliant



PT-267C T-Adapter

PREMIER

Item No.	Mfg. Part No.	Description
4831237500	PT-267C-50	6P4C Plug to 6p4C PHONE and 6P2C MODEM

PREMIER PT-267C Modular T-Adapters

The PT-267C T-Adapter is equipped with a 6 position 4 wire jack for voice transmission (marked PHONE) and a 6 position 2 wire jack for data transmission (marked MODEM). This adapter is designed for combining voice and data transmission through a single modular jack.

- UL listed
- FCC part 68 compliant



PT-267A-4 Modular T-Adapte (with Tail)

PREMIER

Item No.	Mfg. Part No.	Description
0000198475	PT-267A-4-50-TAIL	6P4C Plug to Dual 6P4C Jacks with 4" Line Cord Tail

PREMIER PT-267A-4 Modular T-Adapter (with Tail)

The PT-267A-4 Modular T-Adapter (with Tail) connects two telephone or ancillary devices to one outside line using an existing modular installation. Two 6 position 4 conductor jacks are wired in parallel to one 6 position 4 conductor plug, mounted at the end of a 4-inch line cord tail. The 4-inch line cord tail provides extra flexibility during installations, to avoid blocking adjacent ports on installed CPE or hardware.

- UL listed
- FCC part 68 compliant

Adapters



PT-267A/267E T-Adapters

PREMIER® PT-267A Modular T-Adapters

The PT-267A T-Adapter connects two telephones or ancillary devices to one outside line using an existing modular installation. The 6 conductor model includes a 4 position plug and two jacks, each equipped with 6 contacts in parallel. The 4 conductor model has 4 contacts in parallel.

- UL listed
- FCC part 68 compliant

PREMIER

Item No.	Mfg. Part No.	Description
4830197500	PT-267A-4-50	6P4C Plug to Dual 6P4C Jacks
4807667500	PT-267A-6-50	6P4C Plug to Dual 6P6C Jacks In Parallel



PT-173 T-Adapter

PREMIER PT-173 Modular T-Adapters

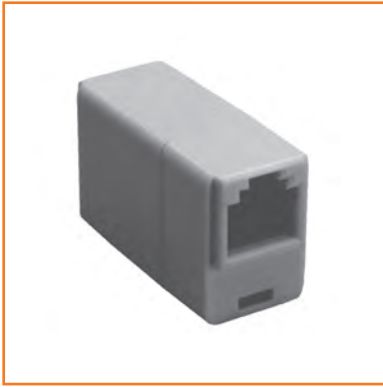
The PT-173 Triple T-Adapter is used with 2 line modular systems. This T-Adapter is plugged into a 4 conductor modular jack that is wired for 2 lines. Jack 1 is labeled Line 1; Jack 2 is labeled Line 2; Jack 3 is labeled Line1/Line2. Two single-line phones can be connected to the Line 1 and Line 2 jacks. The third jack can be used to run a modular cord to another jack enabling the user to connect two single-line telephones. This will extend the 2 lines to various phones throughout the premises.

- UL listed
- FCC part 68 compliant

PREMIER

Item No.	Mfg. Part No.	Description
4831417500	PT-173-50	6P4C Plug to 3 Jacks (L1, L2, L1+L2)

Couplers



PT-460A Line Cord Couplers

PREMIER® PT-460 Modular Line Cord Couplers

Cord couplers are designed to connect 2 modular plug ended line cords together to allow extensions of plug ended line cords.

- UL listed
- FCC part 68 compliant

PREMIER

Item No.	Mfg. Part No.	Description
4830277500	PT-460A-4-50	6P4C Ivory
4830427500	PT-460A-6-50	6P6C Ivory



PT-1542A Filter

PREMIER PT-1542A Radio Interference Filter

The PT-1542A jack is non-modular and used to filter AM/FM and CB broadcast interference. This 4 conductor jack can be used in place of a 42A connecting block. The plastic base consists of a toroidal choke coil plus screw terminals and is housed in a plastic cover. Installation consists of connecting the spade leads from a non-modular line cord to the wire leads inside the filter.

- UL listed
- FCC part 68 compliant

PREMIER

Item No.	Mfg. Part No.	Description	Dimensions
4803757505	PT-1542A-60	Hard-wired Filter for AM/FM and CB Radio Broadcasts	2"W x 1"H x 4"L



PT-1542AM Filter

PREMIER PT-1542AM Radio Interference Filter

The PT-1542AM jack is designed to filter AM/FM and CB radio broadcast interference. This 6 position 4 conductor modular filter is used in place of a surface mounted jack. The plastic base and cover house the radio interference filter.

- UL listed
- FCC part 68 compliant

PREMIER

Item No.	Mfg. Part No.	Description	Dimensions	USOC Codes
4830247505	PT-1542AM-49	Modular Filter for AM/FM and CB Radio Broadcasts	2"W x 1"H x 4.5"L	RJ11C / RJ12C